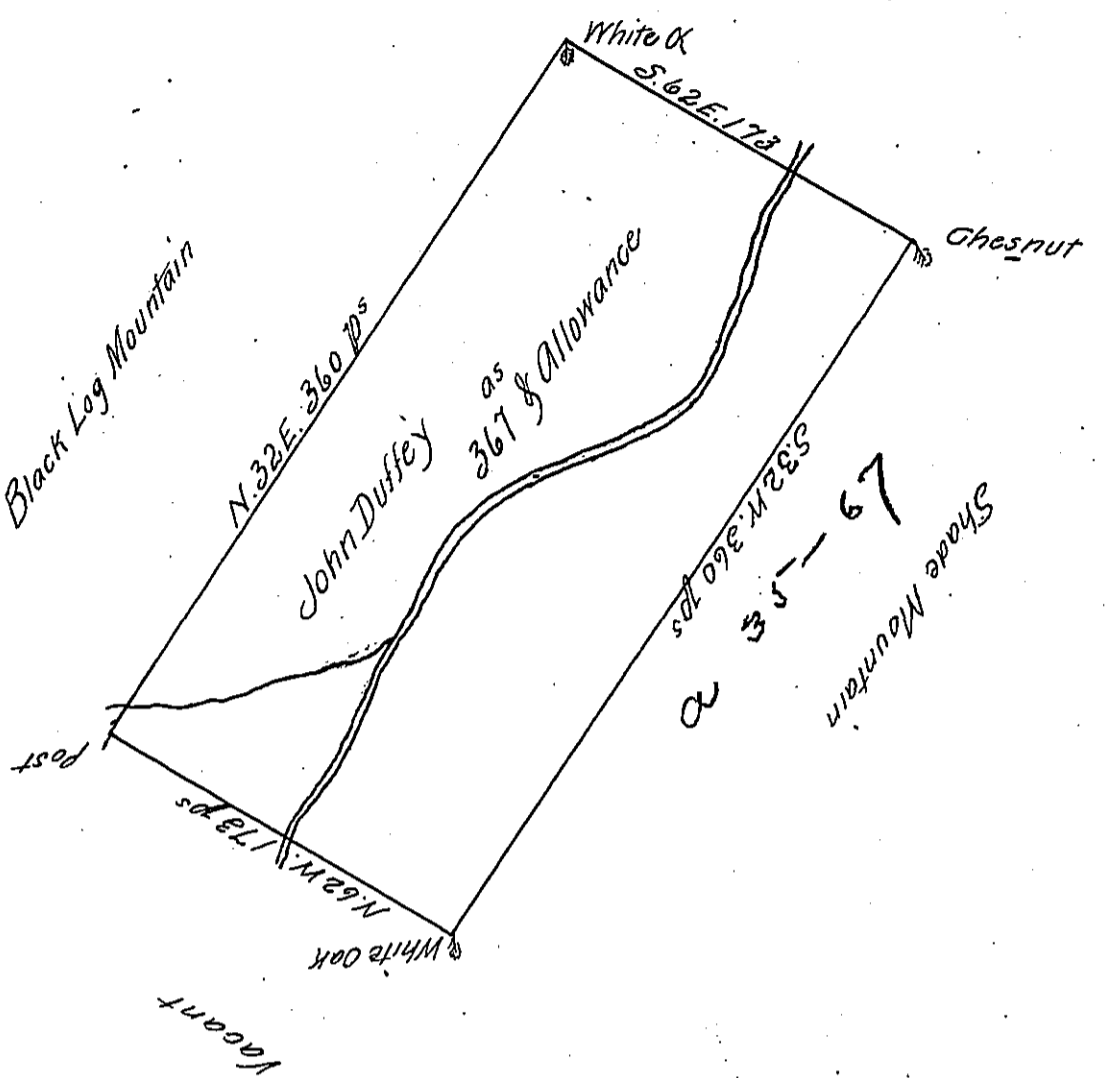


John Harrison Page 202



In pursuance of an order N^o 2743 dated the tenth day of February 1767
 Surveyed for John Duffey the above described Tract of Land Situate
 on the Shade Run between the Shade Mountain and Black Log Mountain
 in the County of Cumberland Containing three hundred and sixty seven
 Acres and the usual allowance of six acres p^{ct} for Roads &ca
 P Richard Tea Dep. Survey^r
 To John Lukens Esq^r Surveyor General

IN TESTIMONY that the above is a copy of the original remaining on file in
 the Department of Internal Affairs of Pennsylvania, made
 conformably to an Act of Assembly approved the 16th day of
 February, 1833, I have hereunto set my Hand and caused
 the Seal of said Department to be affixed at Harrisburg,
 this Fourth day of November 1910

Henry Houch

Secretary of Internal Affairs.